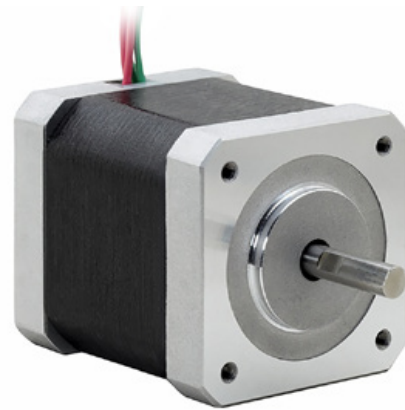


Compact Power

AME17-series hybrid bipolar stepper motors meet NEMA17 dimensions, provide high torque in demanding environments, and are available in single-shaft or dual-shaft models.

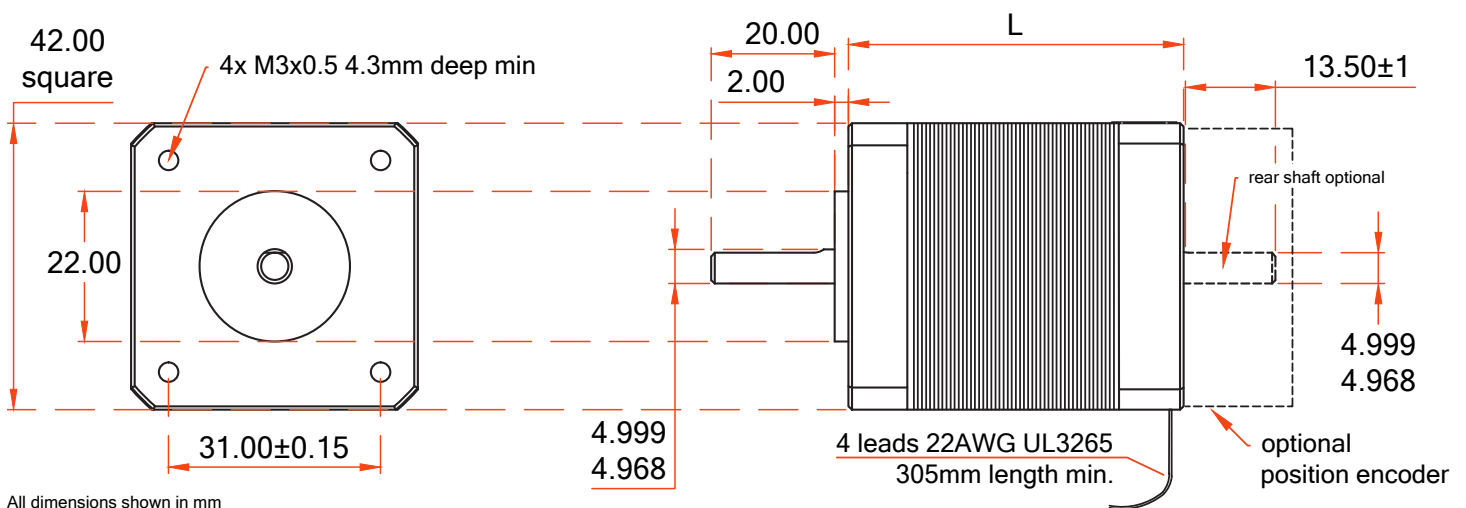
Dual shaft motors are optionally available with a position encoder.



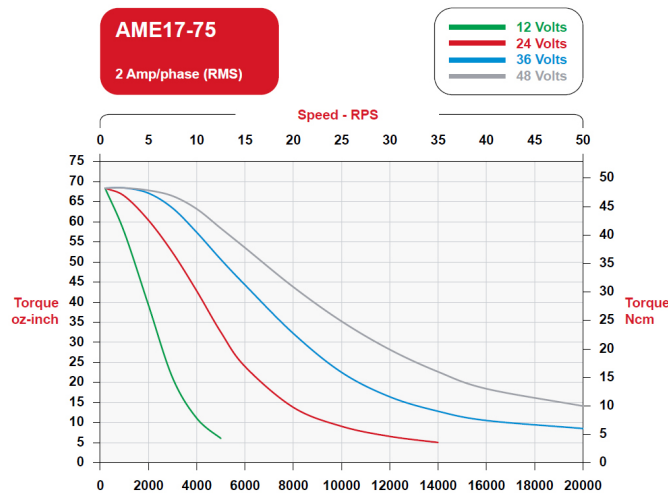
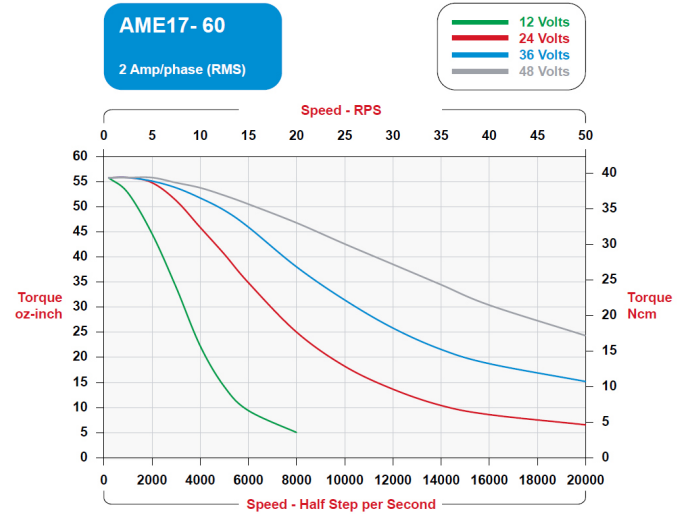
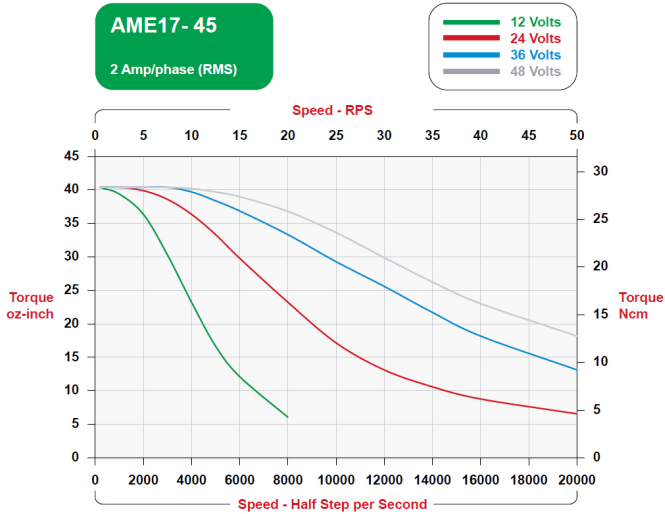
Ordering

AccelMotion Model Number		Current / Phase	Resistance / Phase $\pm 10\%$	Inductance / Phase $\pm 20\%$	Holding Torque		Weight		Length max. (L) $\pm 0.8\text{mm}$	
Single Shaft	Dual Shaft	A	Ω	mH	oz-in	N-cm	oz	g	in	mm
AME17-45S	AME17-45D	2	1.1	1.9	45	32	9	255	1.42	36.1
AME17-60S	AME17-60D	2	1.3	2.5	60	42	11	312	1.62	41.1
AME17-75S	AME17-75D	2	1.6	4.0	75	53	13	369	1.93	49.1

Mechanical



Performance



Specifications

Step Angle	1.8° ± 5% (200 steps/rev)
Absolute Temperature	80°C abs. max. (at case)
Ambient Temperature	-20°C to +50°C
Insulation Resistance	100MΩ min. at 250VDC
Dielectric Strength	500VAC for one minute

Motor Connection	
Wire Color	Phase
Red	ΦA
White/Red Stripe	ΦĀ
Green	ΦB
White/Green Stripe	ΦB̄