

AccelCom provides a convenient and useful console/terminal tool for communication with DC-Series controller modules.

It was designed for use with PCs, and runs under Microsoft Windows operating systems (supported under Windows Vista, Windows 7, Windows 8, and Windows 10).

AccelCom connects with DC-Series devices via the AccelMotion Communications Bus; the Virtual Serial Port model exposes DC-series device Command Line Interface (CLI) for easy configuration, programming, and debugging of motion control programs. Even in applications which utilize a host-based control script or program, AccelCom can be useful in testing programming methods and parameter values.

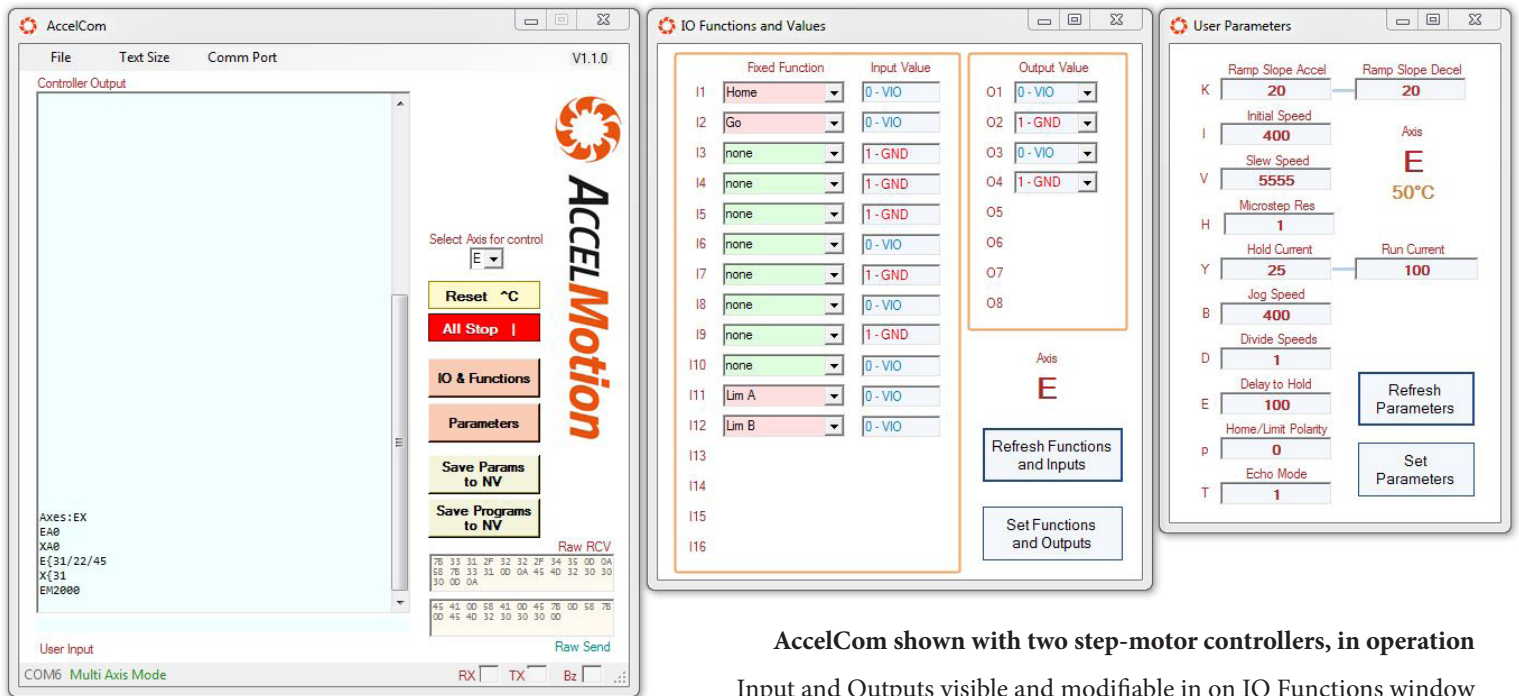
AccelCom features a straightforward console window, but also includes specialized displays for status and screens for setting parameters and configuring input/outputs and reading values.

Features

- ✧ Standard terminal functions, with windows for outgoing commands and incoming responses received (from DC series units connected via the AM communications bus)
 - DC-series controller programs can be debugged, modified, and stored from within AccelCom
 - Text size for the monitor window is programmable, for readability with varying screen sizes
- ✧ Optimized for DC series of controller/driver units, including:
 - Automatic communications setup, including baud-rate and other communications settings
 - Easy COM port selection (either standard or virtual)
 - Optimized I/O and Parameter support windows show controller-specific data
- ✧ Command string storage and download function
- ✧ Memory image upload provides backup function
- ✧ Status bar provides shows operating modes, RX and TX data, and various status messages
- ✧ Raw ASCII send and receive data windows for evaluation of custom script control
- ✧ Convenient function buttons, allow:
 - One-button entry into Single-Axis or Multi-Axis Mode
 - Easy naming or renaming of DC-Series axis controller (when in Single-Axis Mode)
 - Reset (^C) button resets all controller(s) immediately and completely
 - All-Stop function (|), stops motion and programs running, individually for each axis
 - Input Port setup screen allows programmable assignment of fixed-functions to input ports, permanently
 - Easy reading of all input signal values
 - Writing of all output port values
 - Graphical modification of operating parameters in one easy view
 - Quick save of parameters to NV (non-volatile) flash memory
 - Quick save of programs to NV memory

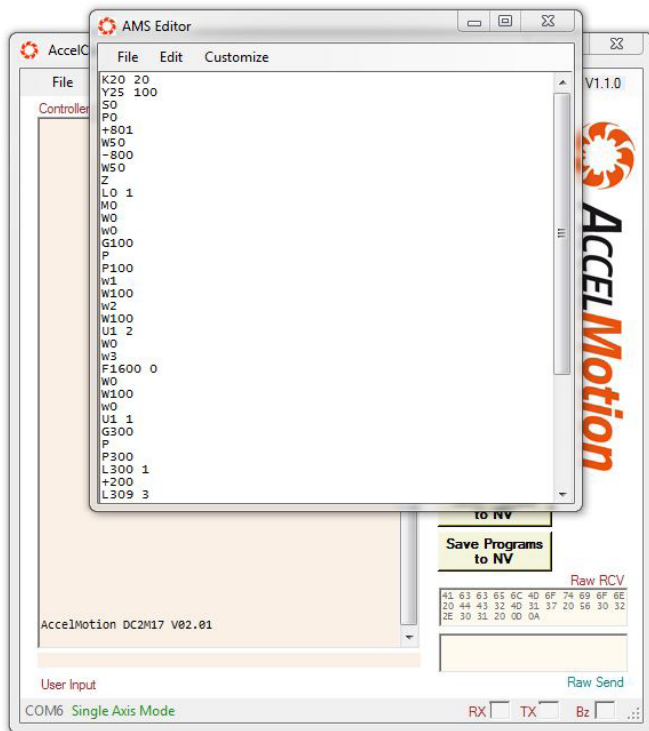


AccelCom may be downloaded at no cost from our website: accelmotion.com/accelcom



AccelCom shown with two step-motor controllers, in operation

Input and Outputs visible and modifiable in on IO Functions window
 Motion Parameters visible and modifiable on Parameters window
 Each window shows applicable axis controller address



AccelCom built-in command editor shown

AccelMotion® DC2M17 Program and Parameter commands are being reviewed and stored in this view – later these programs can be downloaded to any controller on the AM Comms Bus.